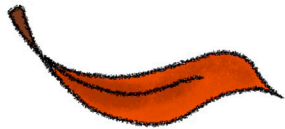


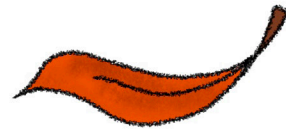
Sammy's Adventure



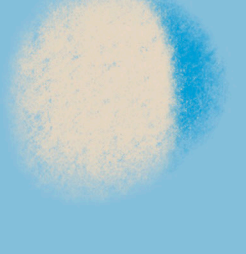
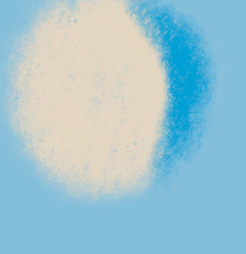
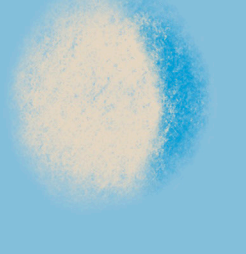
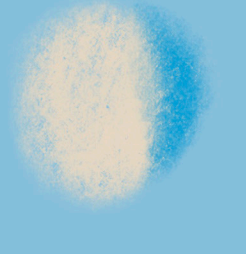
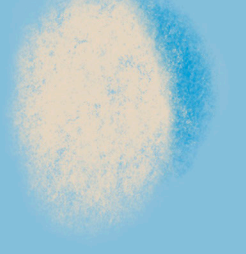
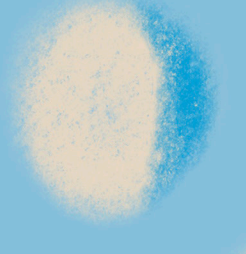
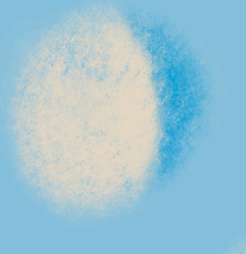
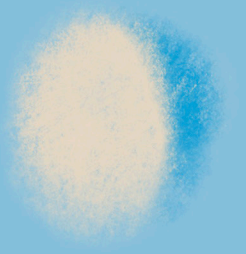
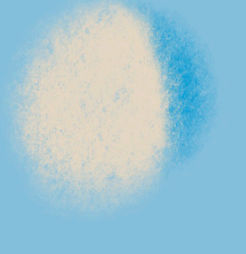
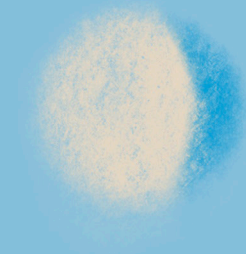
Monica McGovern



Dedicated to:



Luke Wadle





Sammy's Adventure

This is Sammy.
Sammy is a
mushroom.





Sammy lives
in a field near
the forest.



He lives
with his
mother
and his
father.

One day
Sammy
goes out
to explore
the forest.



**Sammy sees
big, tall trees.**





**Sammy sees dry,
brown and red leaves.**

He wanders
deeper and
deeper into
the forest.







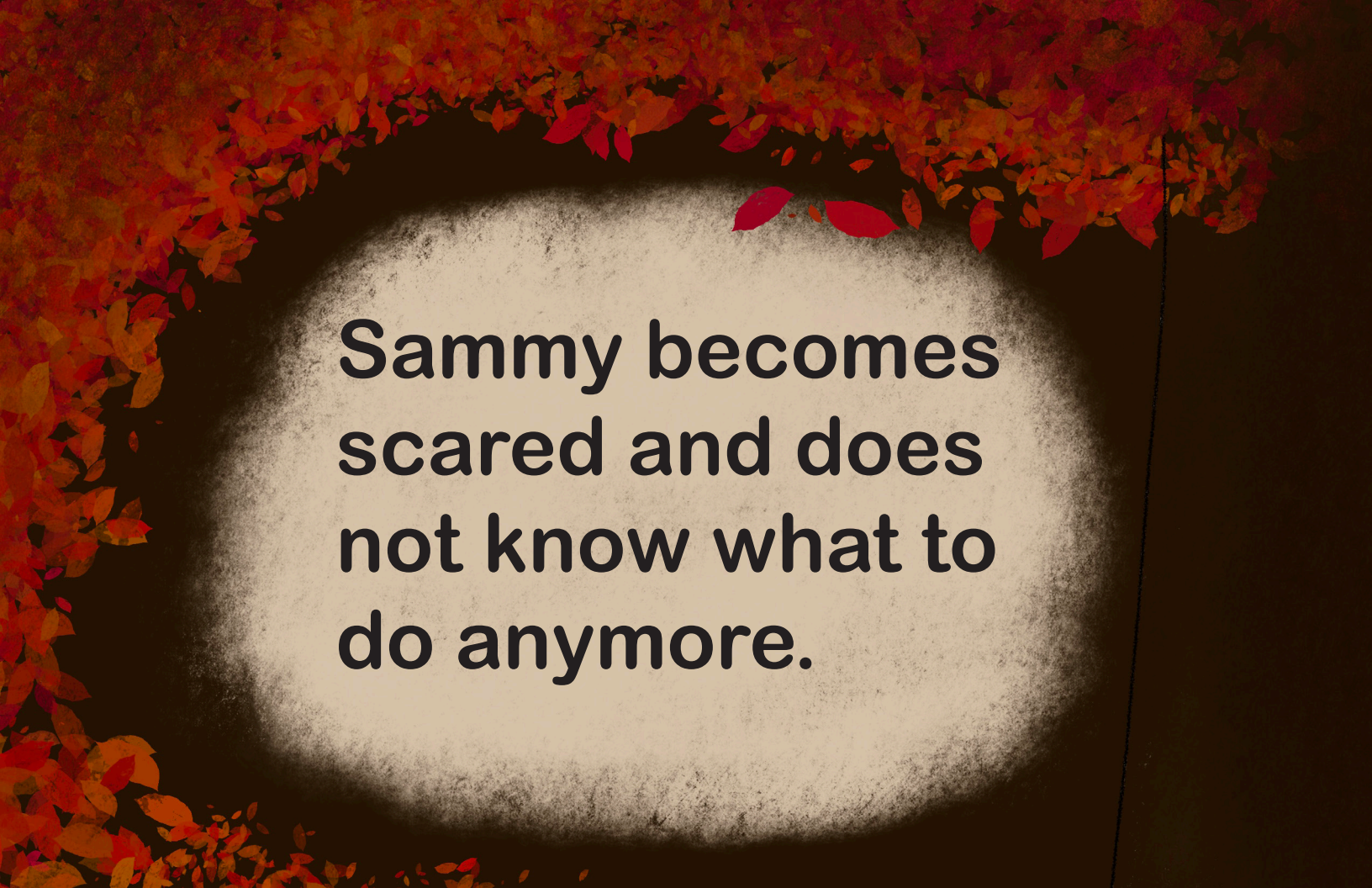
Soon Sammy realizes that the forest has begun to darken around him.



He looks around and does not recognize the forest around him.



**Sammy realizes that
he is lost in the forest.**



**Sammy becomes
scared and does
not know what to
do anymore.**



Then Sammy remembers what his mother told him once.





**“If you ever get lost,
stay where you are
and call for help.”**



Sammy stays where he is and calls out for help.

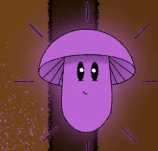


**Sammy waits for someone
to respond to his call.**

Suddenly,
Sammy sees
a light in the
distance.



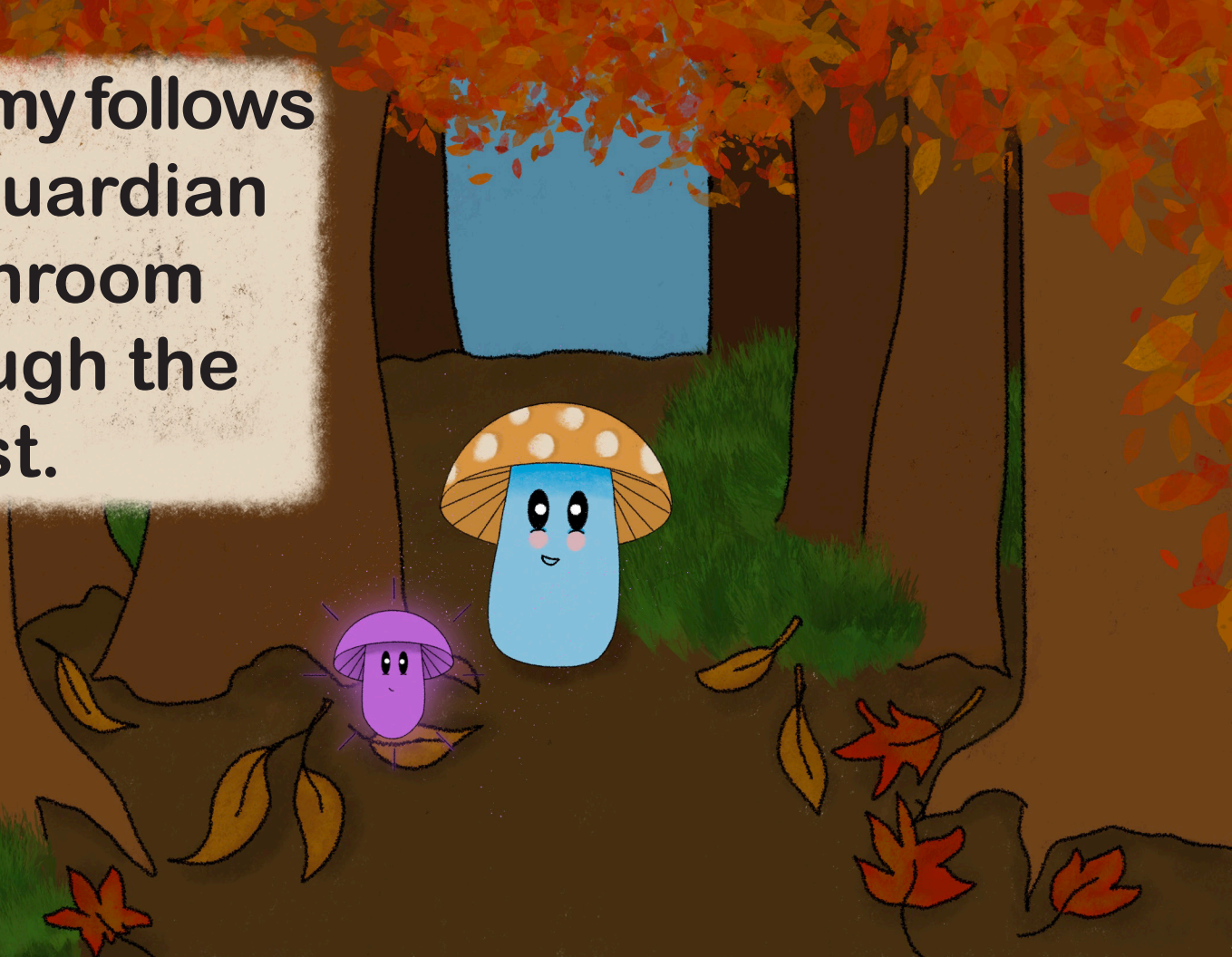
The light gets
closer and
closer till
Sammy sees
who it is.



It is Sammy's guardian mushroom that has come to help him find his way home.



Sammy follows
his guardian
mushroom
through the
forest.



Finally they reach
Sammy's home.





Sammy's parents are so glad that he was brought home safely.

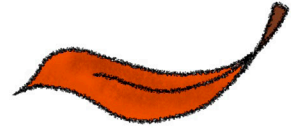
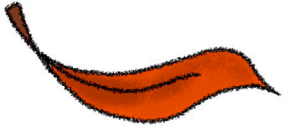


Sammy learns that he should never wander into the forest alone.



The End

About the Author:



The author and illustrator of this children's book is Monica McGovern. She is a Junior and graphic design student at Benedictine College in Atchison Kansas. She hopes to do photography, layout, and design after college where ever she is called to live and work.



