

The background is an abstract composition of thick, textured brushstrokes. The color palette transitions from a muted green on the left to a vibrant yellow and orange in the center, and finally to a deep red and magenta on the right. The strokes are layered and overlapping, creating a sense of depth and movement. The overall texture is reminiscent of a canvas or heavy paper.

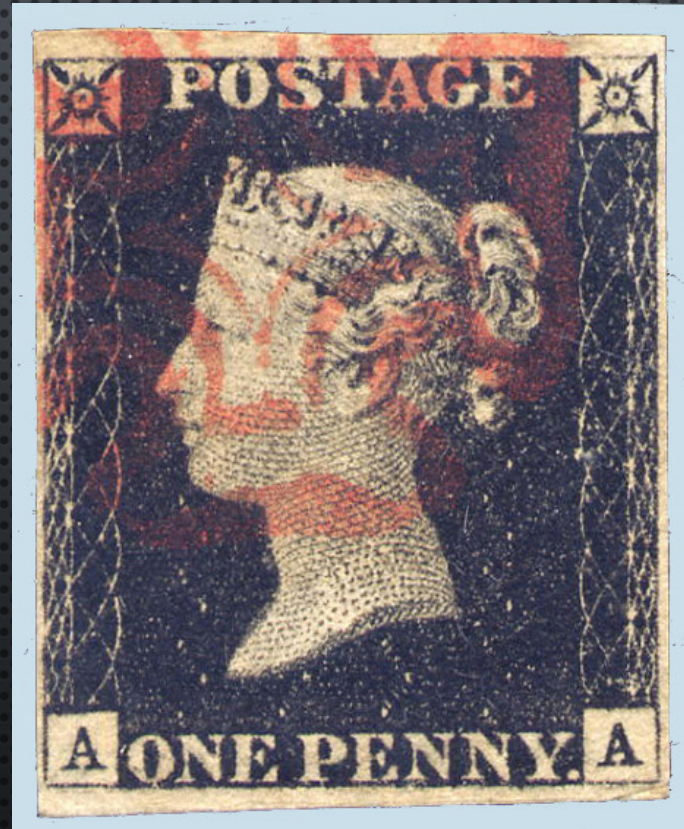
STAMPS

STAMPS ALWAYS INCLUDE 3 IMPORTANT
PIECES OF INFORMATION IN THEIR DESIGN:



- 1. SUBJECT
- 2. STAMP VALUE
- 3. COUNTRY OF ORIGIN

THE VERY FIRST STAMP WAS ...



The Penny Black
May 6, 1840



THE FIRST TWO STAMPS TO APPEAR IN AMERICA IN 1847 WERE ...

- **1. BEN FRANKLIN**
 - THE FIRST POSTMASTER GENERAL
 - FIVE-CENT STAMP
- **2. GEORGE WASHINGTON**
 - TEN-CENT STAMP



WHAT QUALITIES SHOULD
A DESIGNER CONSIDER
WHEN DESIGNING FOR A
SMALL-SCALE WORK VS.
A LARGE-SCALE WORK?



HOW DOES TYPOGRAPHY REVEAL THE PERSONALITY OF THE FIGURE?



HOW DOES TYPOGRAPHY CONVEY A MESSAGE
ABOUT THE STAMP TO THE VIEWER?

DESIGNING A STAMP REQUIRES SERIOUS THOUGHT
AND PLANNING BECAUSE
OF SIZE & SCALE

- THE MOST IMPORTANT PART IS
CHOOSING THE SUBJECT

ELEMENTS

- POINT
- LINE
- SHAPE
- FORM
- TEXTURE
- SPACE
- COLOR

Principles

- Unity
- Rhythm
- Movement
- Balance
- Emphasis
- Harmony
- Proportion & Scale

ELEMENTS OF DESIGN



PRINCIPLES OF DESIGN

Unity

Careful selection of colors and shapes

Rhythm



Typography

Proportion
Central object

