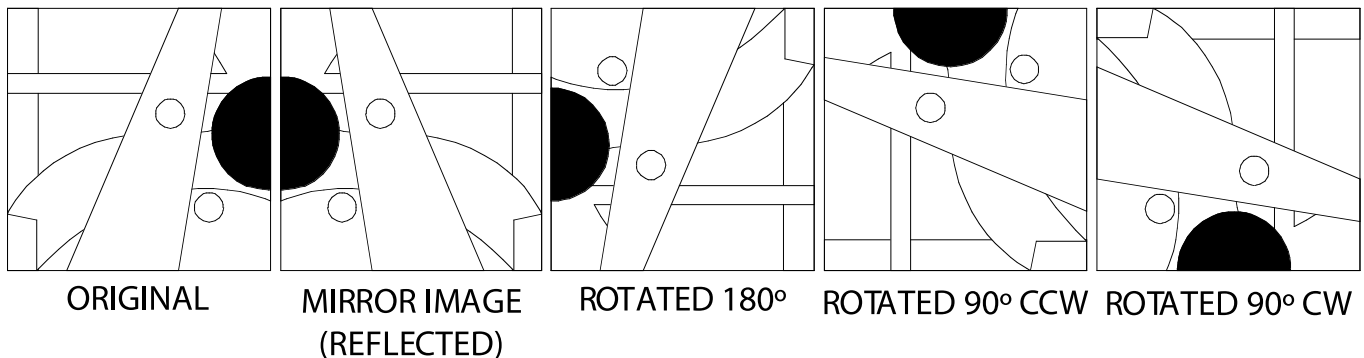


2D Design Foundations

Color Study 12 x 12

Assistant Professor Sue Leo

- The canvas size is 12" x 12".
Divide this into 16 squares measuring 3" x 3."
- Develop a very SIMPLE square module design composition comprised out of shapes that provide interest. Consider negative + positive space, and shapes to paint in solid FLAT singular colors within the design. You will have 16 total exercises (16 square modules) to complete. There are 13 exercises that require 3 colors, 1 exercise requiring 2 colors, and 2 exercises that require 4 colors. So you will want to engineer your design module to be able to accommodate those color combinations to keep the integrity of your design pattern in the overall composition. Your design can be geometric, or free hand, organic shapes, but the module needs to be repeated within the grid structure.
- Arrange your 3 x 3 square mini composition into a larger composition on your canvas into the 16 squares. You can rotate the design 90, 180 degrees, or reflect it (mirror image), or flip it to create an interesting pattern for the overall composition — or you can chose to keep the 3x3 module oriented in one direction.



- The required exercises are detailed in order on the Color Study Diagram handout at right. Use this chart to create your custom color palette to document your study. The exercises are in the prescribed order of color scheme explorations corresponding to the 16-module grid on your canvas board.

PRIMARY 	SECONDARY 	TERTIARY 	TRIADIC
COMPLEMENTARY 	ANALOGOUS 	SPLIT COMPLEMENTARY 	TINTS
WARM COLORS 	RECTANGLE/TETRADIC 	TONES 	COOL COLORS
VALUE 	MONOCHROMATIC 	SHADES 	SQUARE

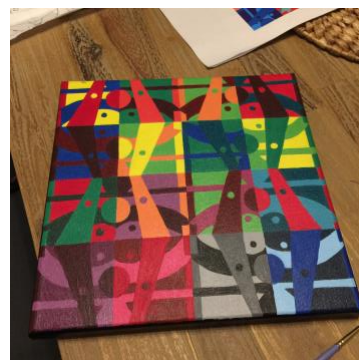
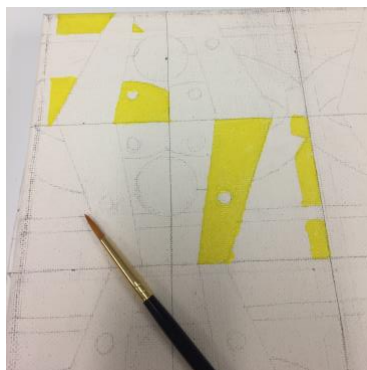
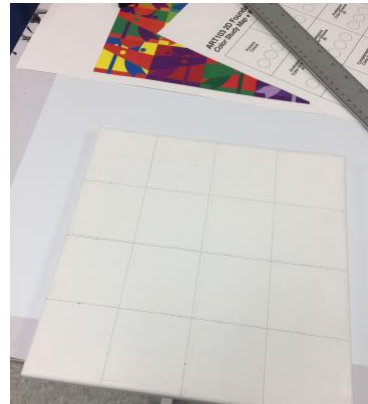
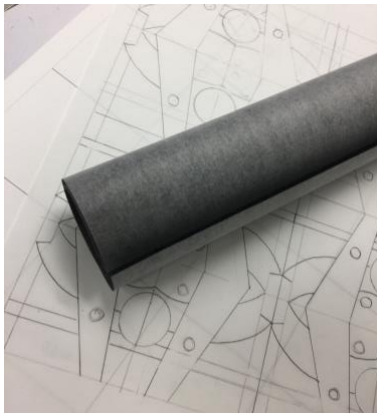
- All your paint colors will be derived from 3 primary colors. Label your paint containers with your colors on the lids.
 - Primary colors (red, blue and yellow)
 - Create secondary colors from the primaries: orange, green and purple - purple will be the most challenging to get a good hue to work with.
 - Mix a set of tertiary colors from your secondary colors: yellow-orange, red-orange, red-violet, blue-violet, blue-green, yellow-green
 - Use the muffin tins to keep your paint organized and stable. It also will help in transporting your supplies.

2D Design Foundations

Color Study 12 x 12

Assistant Professor Sue Leo

6. On the blank 8.5 x 11 Palette Color Study Map provided with the required color schemes. Place a pigment mark of the appropriate color on the sheet within each designated circle within the grid square on the page. This worksheet will be bound in your final book.
7. Lightly create a 3x3 grid on your canvas board with pencil.
8. Trace your 3x3 module design onto tracing paper, then transfer it onto your canvas board in your planned pattern with graphite paper (supplied).
9. Carefully paint your color studies. Tempera paint can have a translucent quality; therefore, you will have to paint several coats. The paint needs to be solid (opaque). The best results are painting a layer, and while it is drying, work on another section. Then go back and paint another layer. It may take more than two layers for the color to be solid. Transitions between colors need to be neat and sharp. If your color bleeds into the adjacent section, go back, and correct the line work. It is best to start with lighter colors first, then lay down darker colors. That will make it easier to go back and touch up line details.
10. Sign the back of your canvas board when you are finished:



Note: The color schemes assigned for this project are different from what is pictured above.