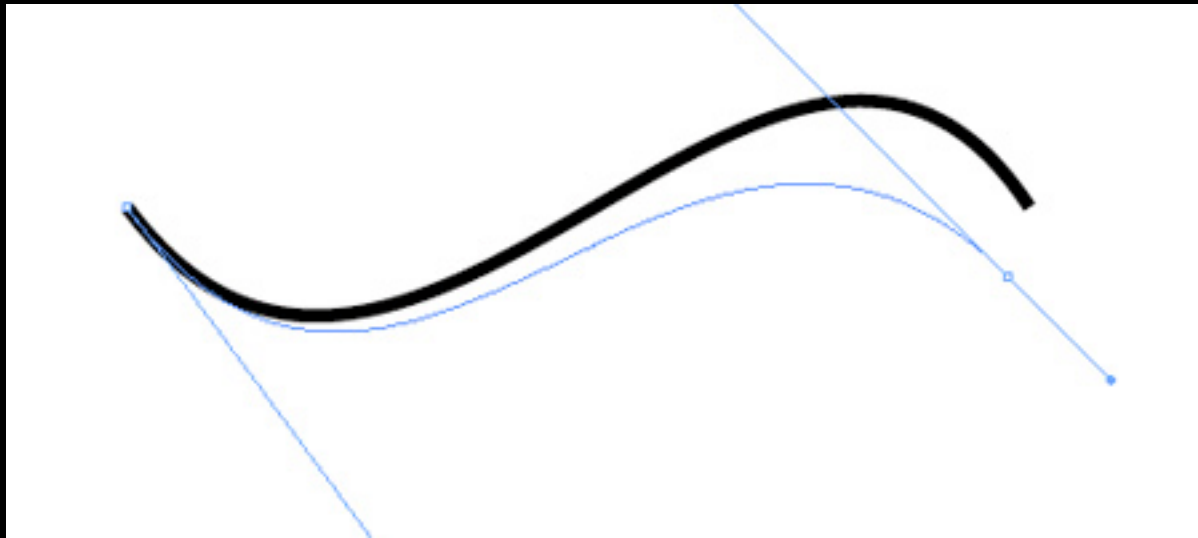


The Illustrator Pen Tool



Time is Money ...

Quick Keys for Every Designer

⌘+C

Copy

⌘+V

Paste

⌘+Z

Undo

⌘+P

Print

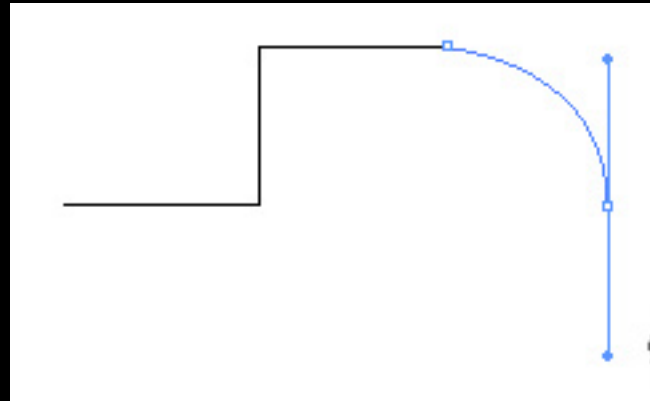
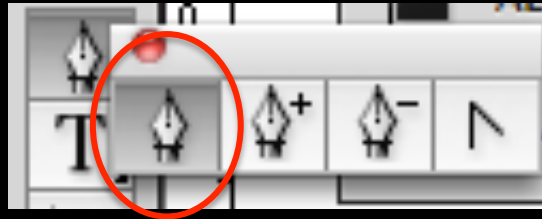
The Pen Tool Functions

Click on artboard to create paths with straight segments, click and drag to create paths with Bezier curves.

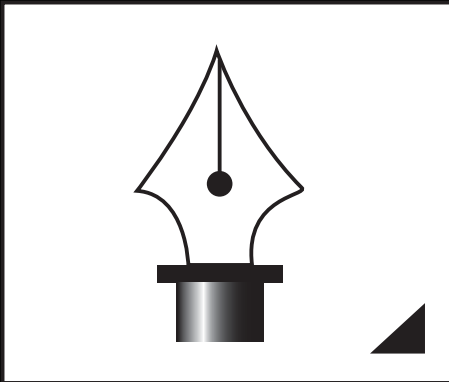
Bézier curves are used to model smooth curves that can be scaled indefinitely.

"Paths," as they are commonly referred to in image manipulation programs, are combinations of linked Bézier curves.

The Pen Tool



Adobe Illustrator



TIP:

shift + tab

Hides all the open palette
except the tool bar

PEN TOOL HOT KEY

P

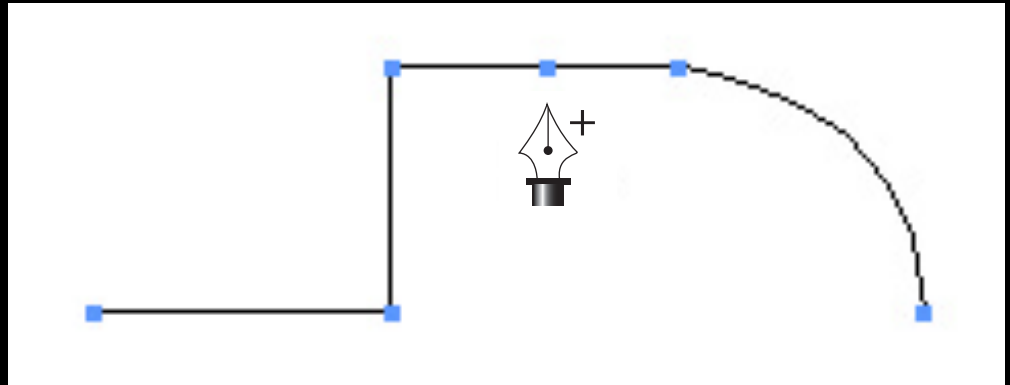
The Pen Tool

- The grand daddy of all vector tools
 - Photoshop
 - Illustrator
- You can do virtually anything using the pen tool. It is not like the brush tool.

Add Anchor Pen Tool

The Pen Tool Functions

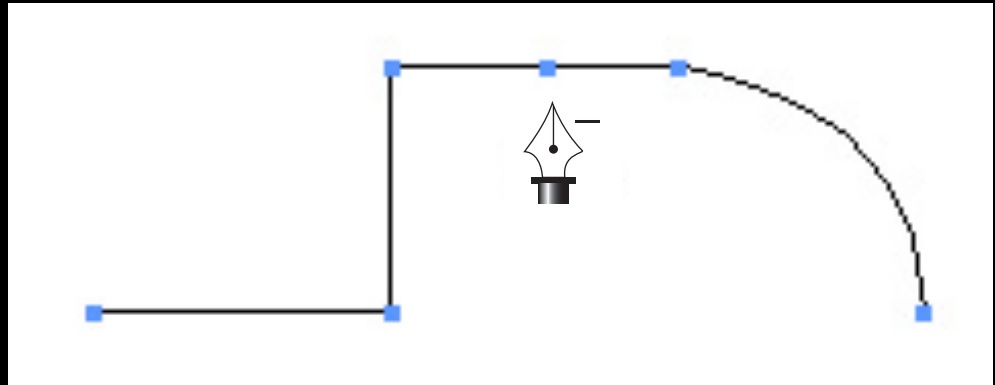
Add anchor point tool : Click on a path segment to add anchor points.



Delete Anchor Pen Tool

The Pen Tool Functions

Delete anchor point tool : Click on anchor point to remove from path.



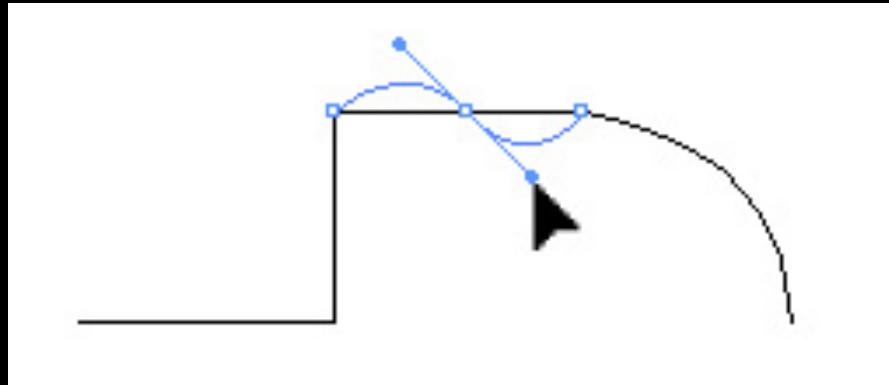
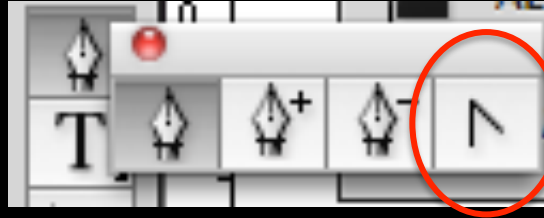
Convert Anchor Point

The Pen Tool Functions

Convert anchor point :

Click on an anchor point and drag to create bezier handles where there were none.

Click on an anchor point with handles to a remove them.



Convert Anchor Point - Opt

The Pen Tool Functions

Convert anchor point :

An alternative way to convert anchor points is to click on the direct selection tool, then select the anchor point you want to change.

A menu will appear at the top of the screen where you can select the type of anchor point to convert.



← Direct Selection Tool



The Pen Tool Functions

Show handles for multiple
selected anchor points.

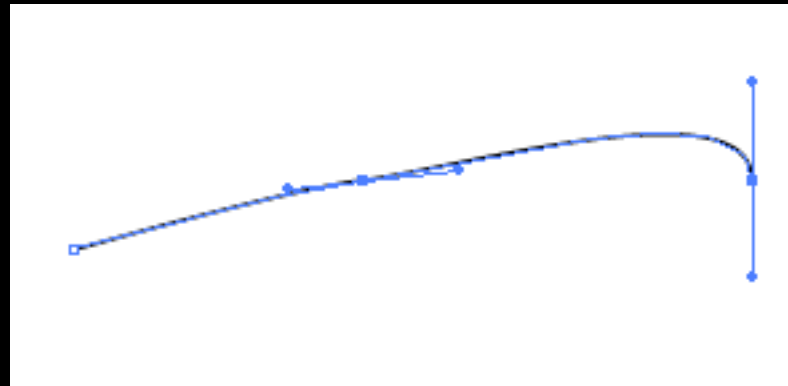
Click on this icon to reveal the
handles of selected anchor points.

To select multiple points,
hold down the shift key
and select each point with
the Direct Selection Tool.



← Direct Selection Tool

Show Handles for Multiple Selected Anchor Points



The Pen Tool Functions

Show handles for multiple
selected anchor points.

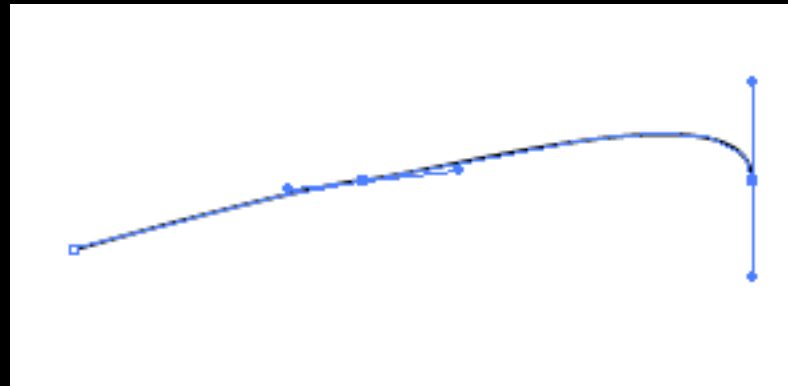
Click on this icon to reveal the
handles of selected anchor points.

To select multiple points, hold down
the shift key and select each point with
the Direct Selection Tool.



← Direct Selection Tool

Show Handles for Multiple Selected Anchor Points

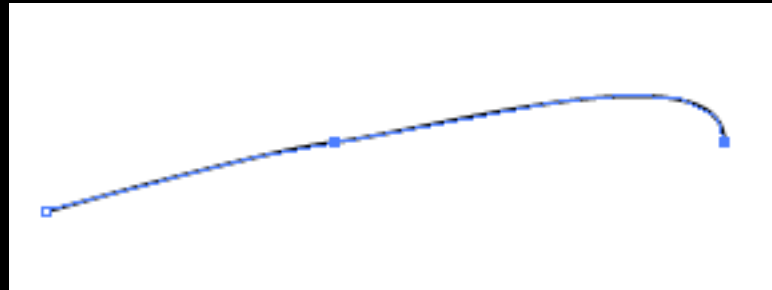
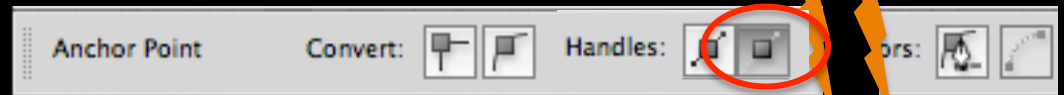


The Pen Tool Functions

Hide handles for multiple
selected anchor points.

Click on this icon to hide the
handles of selected anchor points.

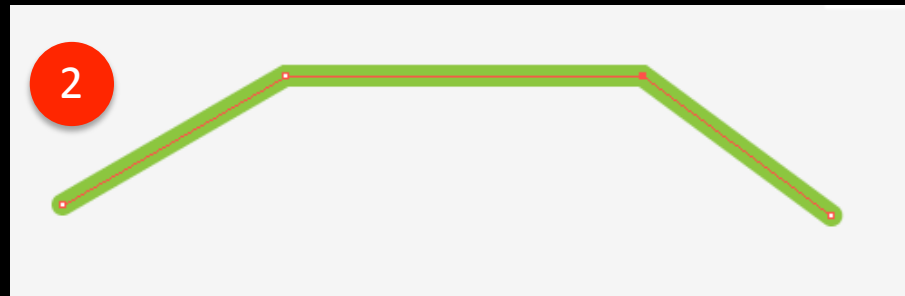
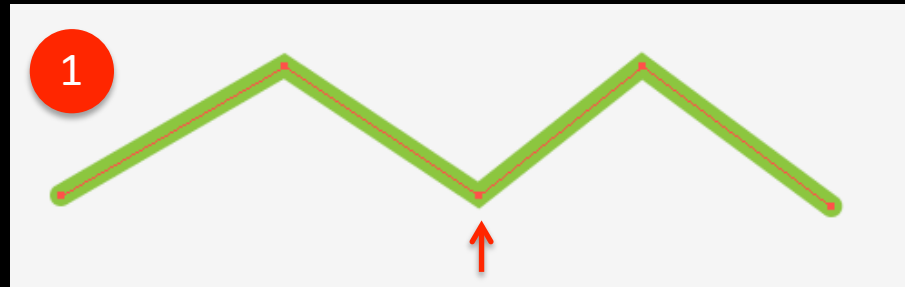
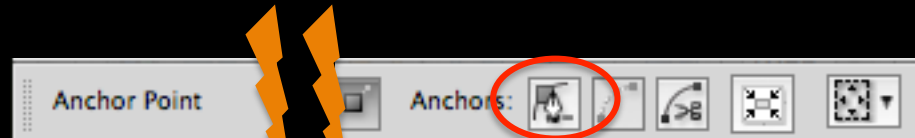
Hide Handles for Multiple Selected Anchor Points



The Pen Tool Functions

Click on this icon to remove
a selected anchor point.

Remove Selected Anchor Points

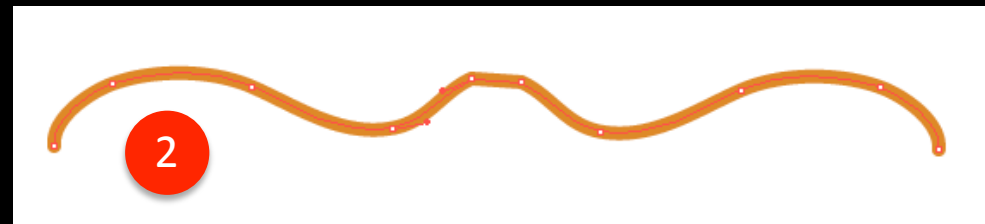
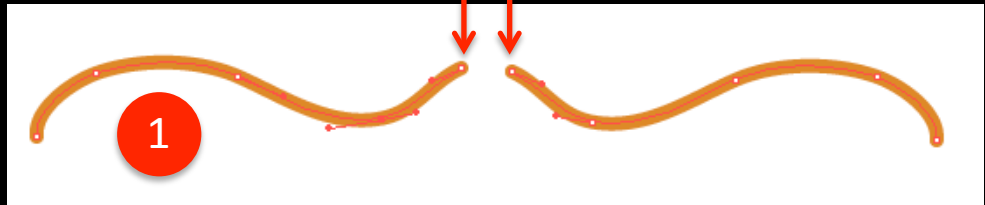
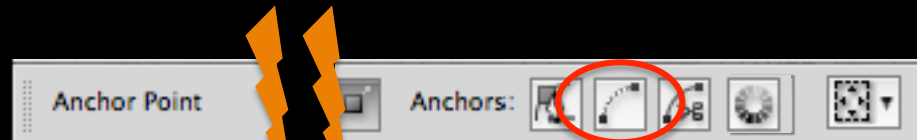


The Pen Tool Functions

Select the end points you want to join.

Click on this icon to connect them.

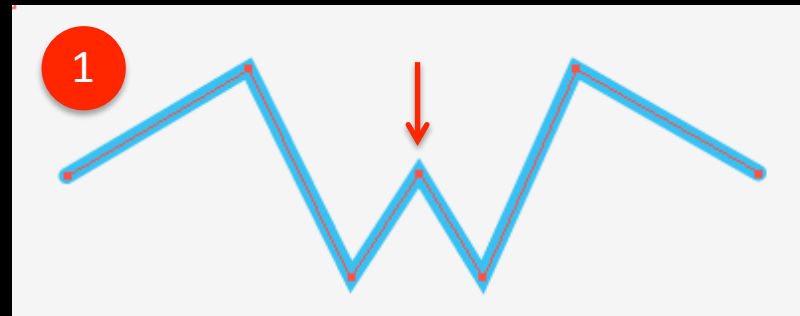
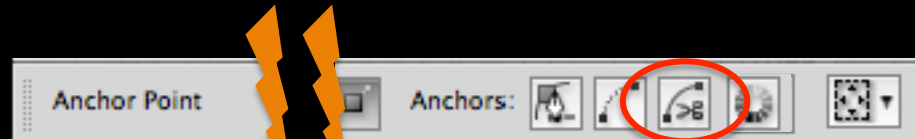
Connect Selected Anchor Points



The Pen Tool Functions

Select point you want to cut.
Click on this icon to separate them.

Cut [Scissors] Selected Anchor Points



The Pen Tool

Keyboard Shortcuts

P

Select Pen tool (P)

+

Select Add anchor point tool (+)

-

Select Delete anchor point tool (-)

C

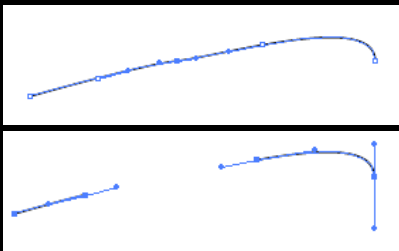
Select Convert anchor point tool (Shift + C)

Shift + C

Select Scissors tool (C)

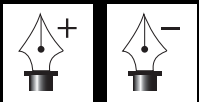
Keyboard Controls

The Pen Tool



- Hold Shift to constrain movements to 45°, 90°, 135° or 180° while creating or editing anchor points and handles.

- Select anchor point with Direct selection tool and click Delete. Anchor and adjoining path segments are deleted leaving two paths.



- Pen tool + Option (Alt) : changes to Convert anchor point tool.

Preferences: Tolerance

The Pen Tool

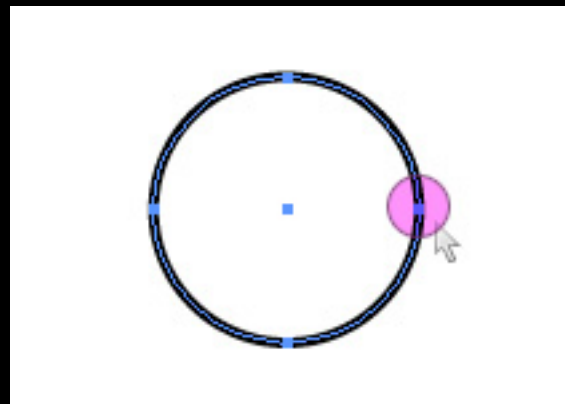
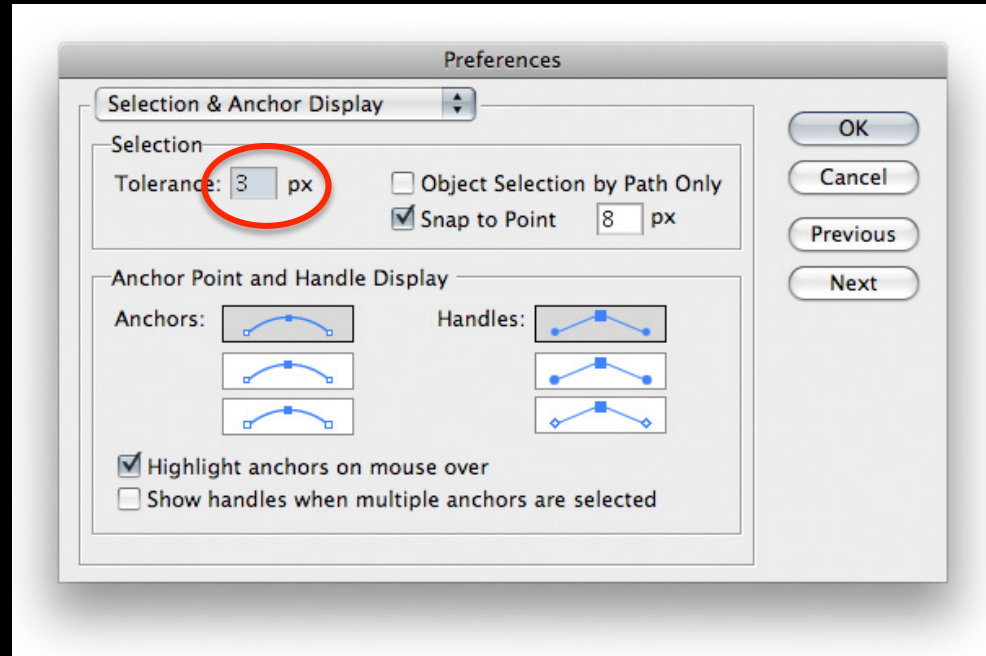
(Illustrator > Preferences >
Selection & anchor display)

Tolerance: Radius of the selection area
around anchor points.

Must be between 1 and 8 pixels,
1px if you're deadly accurate with your
mouse or have a lot of anchors in close
range of one another,

8px if you prefer less precision.

3px is the default value.



Preferences: Object Selection

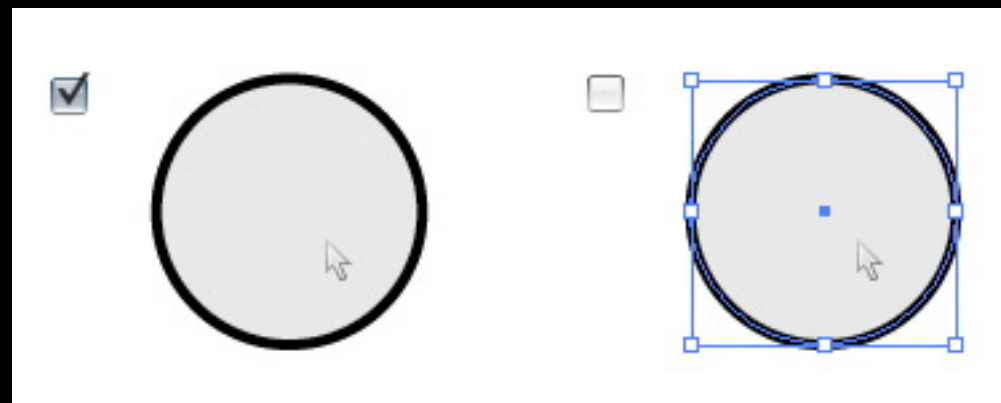
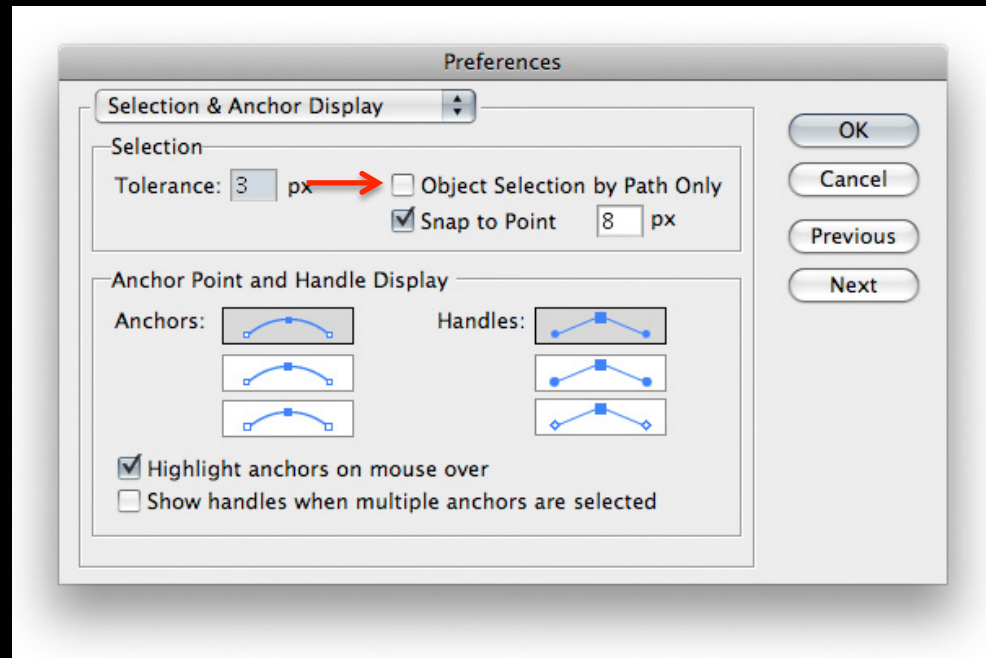
The Pen Tool

(Illustrator > Preferences > Selection & anchor display)

Object Selection by Path Only :

When checked, this option allows selection of objects only by clicking their paths.

Clicking on their filled areas is ineffective, comparable to working in Outline mode (View > Outline).



Preferences: Snap to Point

The Pen Tool

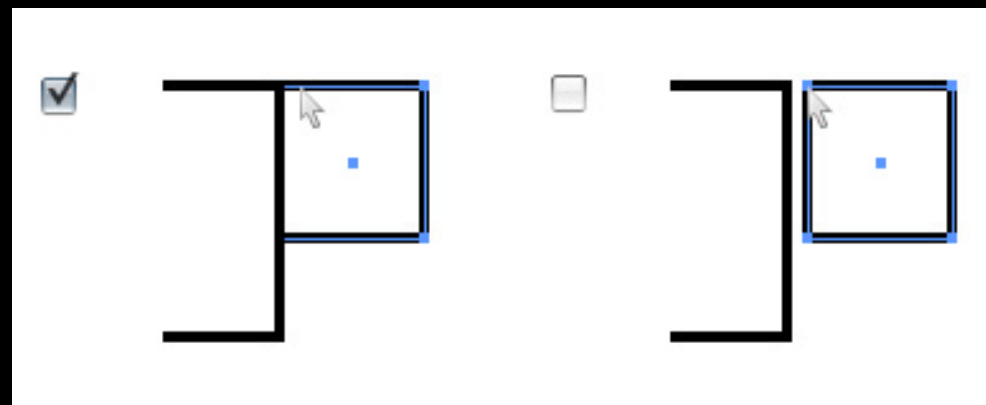
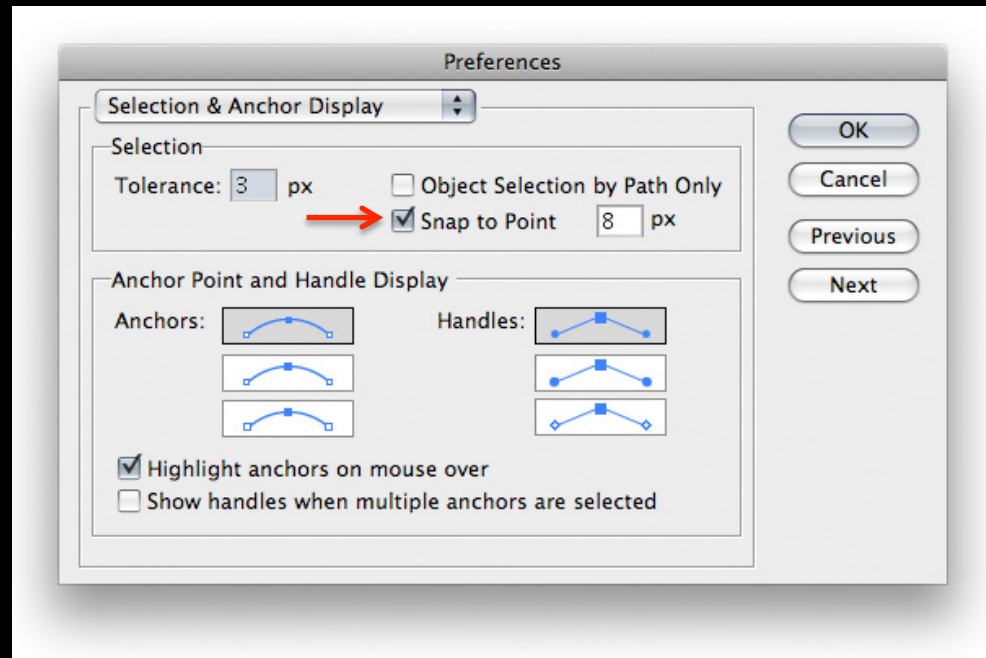
(Illustrator > Preferences > Selection & anchor display)

Snap to Point:

Also checkable via View > Snap to Point, though via the Selection & Anchor Display dialogue.

The tolerance can also be determined from 1 to 8 pixels.

This value represents the radius around anchor points. When lining up two objects, anchor points from one will snap to points of the other should they be positioned within the specified range.



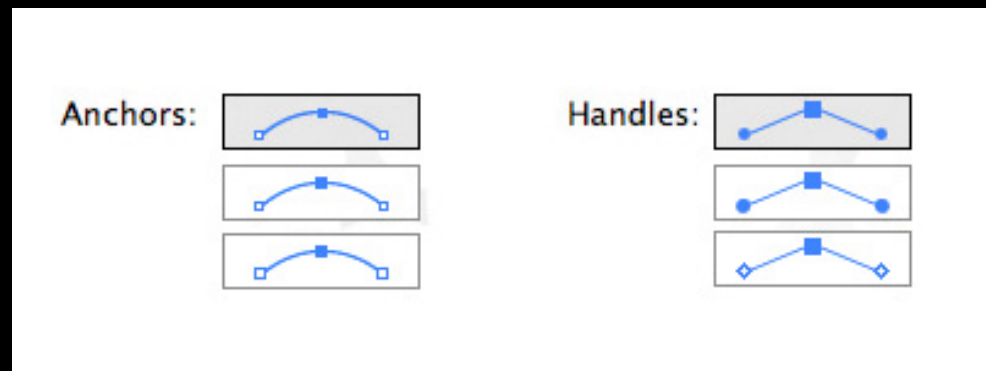
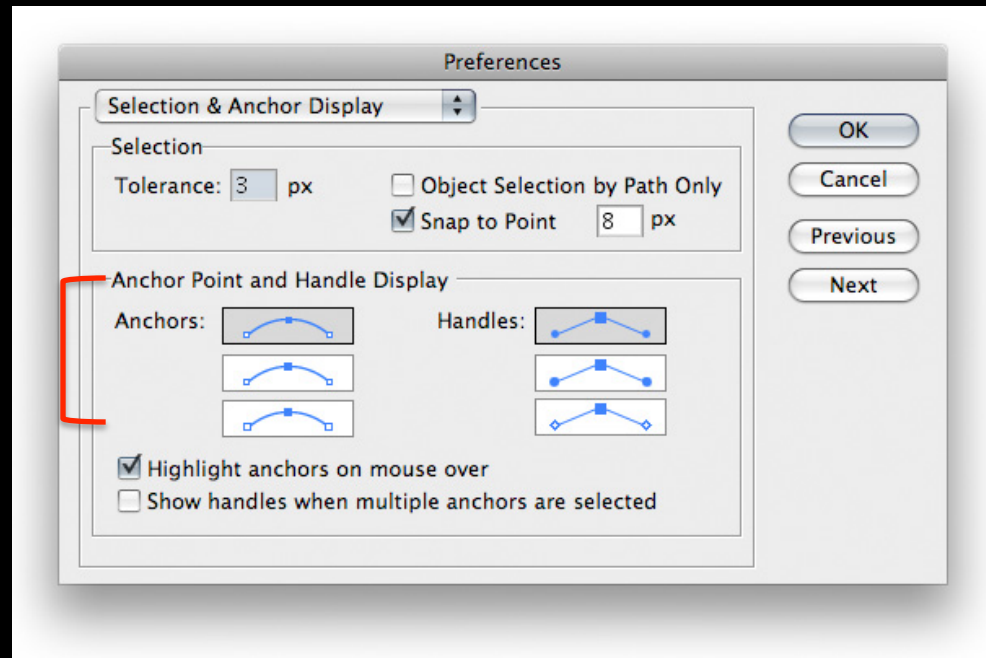
Preferences: Anchors & Handles

The Pen Tool

(Illustrator > Preferences > Selection & anchor display)

Anchor Point and Handle Display:

Determines the way in which your path anchor points and handles are displayed.



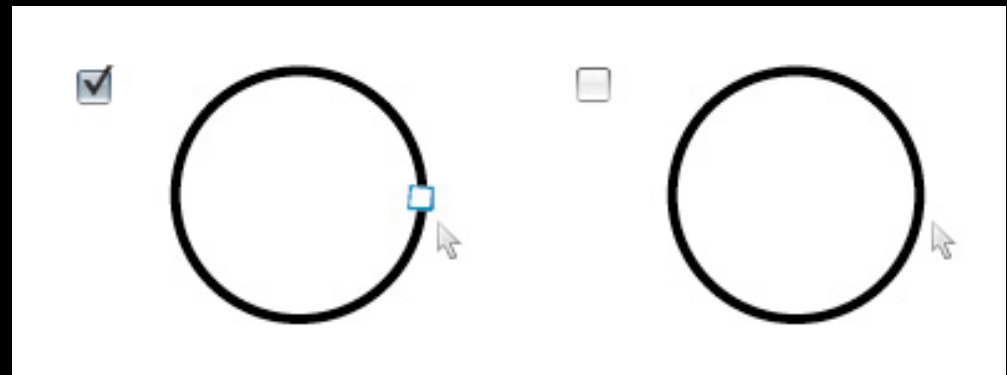
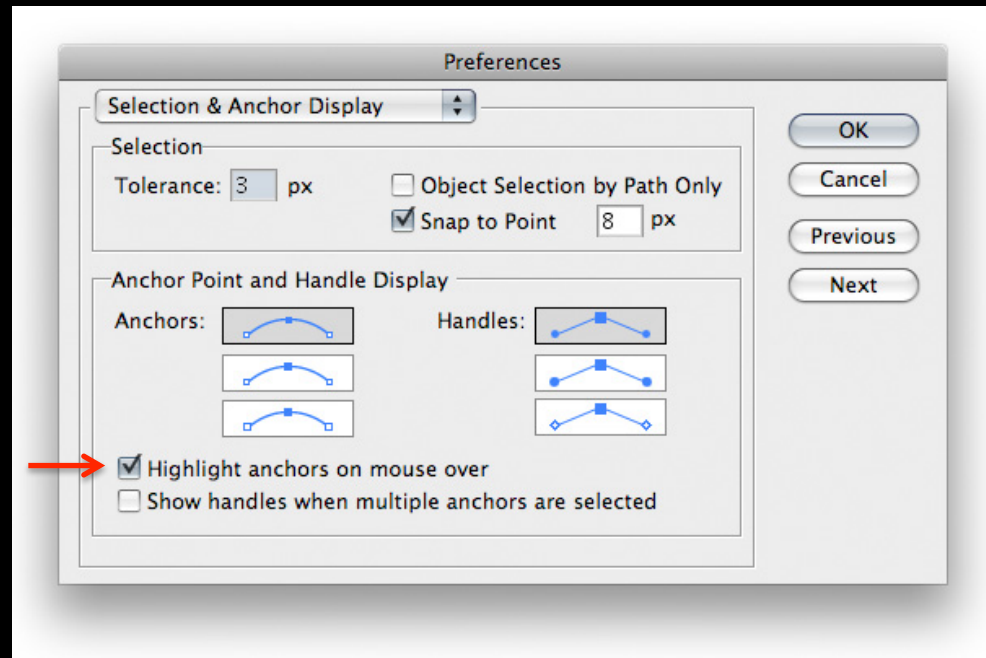
Preferences: Highlight Anchors

The Pen Tool

(Illustrator > Preferences >
Selection & anchor display)

Highlight Anchors on Mouseover:

When checked, highlights anchor
points when hovered over with cursor.



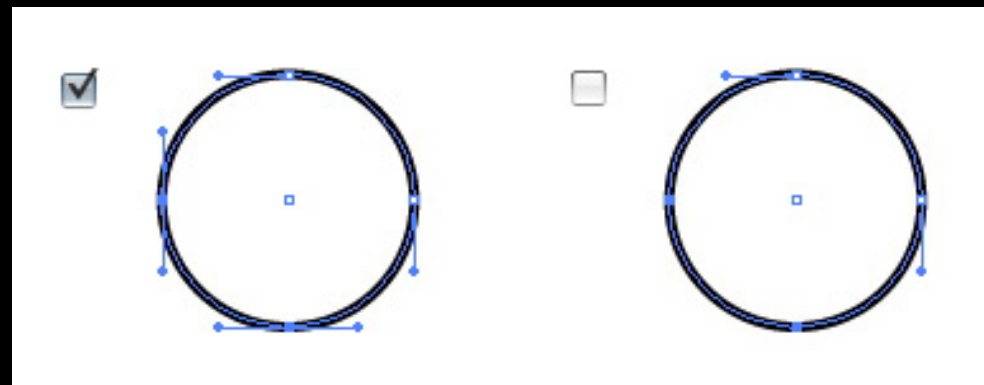
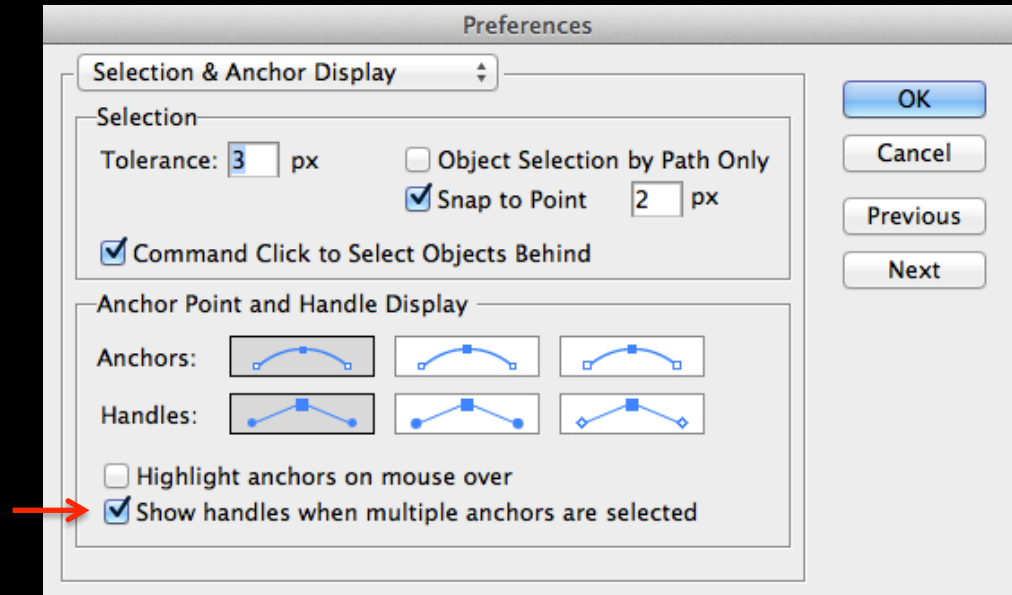
Preferences: Show Handles

The Pen Tool

(Illustrator > Preferences > Selection & anchor display)

Show Handles When Multiple Anchors are Selected:

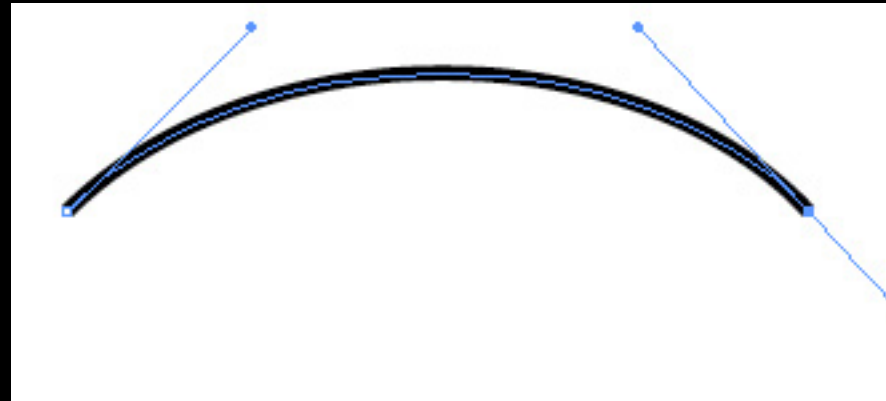
When checked, this options displays the handles of points when multiple points are selected. Otherwise, handles of multiple selected points are *not* displayed.



The Pen Tool

Best Practices

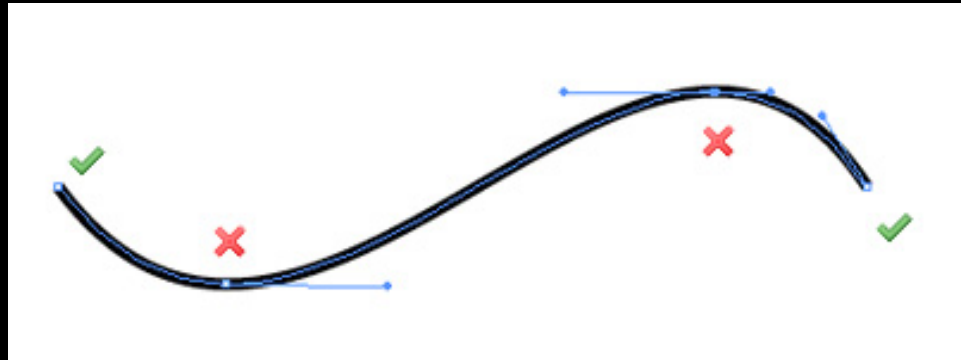
- Drag handles from the first anchor point when beginning a curved path.
- Drag your handles around just one third of the curve you're creating for a smooth path.



The Pen Tool

Best Practices

Position anchor points on a curve where the paths begin to change direction, not in the middle of it's curve.



Be sparing with your use of anchor points, fewer points = neater path.

The Pen Tool

Best Practices

Be sparing with your use of anchor points, fewer points = neater path.

